

# Press release

---

**Learning by doing: Better understanding and implementation of the functions of the iTAC.MES.Suite through hands-on training**

## **Mapping MES production processes autonomously with new iTAC Design Trainings**

**Montabaur, 19 May 2020 – iTAC Software AG ([www.itacsoftware.com](http://www.itacsoftware.com)) has recently expanded its range of training courses to include the new "Design Training" courses. The MES specialist is thus focusing on learning by doing. The practically designed training courses enable participants to autonomously map manufacturing processes in the Manufacturing Execution System iTAC.MES.Suite. This type of training, which is currently also being offered as an online course, is designed to achieve the greatest possible learning success.**

iTAC offers MES and IIoT solutions for transparent, automated production processes. The iTAC.MES.Suite includes various services for the networking, automation and analysis of manufacturing processes.

"The use of the iTAC.MES.Suite is intended to achieve a high increase in efficiency and productivity. For this to succeed in the best possible way, the users must have the necessary qualifications. To make the functionalities of our MES solution tangible, we have recently expanded our training center to include design trainings. In these courses, participants will work with practical applications and use cases. The acquired skills can then be directly incorporated into the installation of the iTAC.MES.Suite," explains Peter Bollinger, CEO of iTAC Software AG.

iTAC Software AG  
Aubachstr. 24  
56410 Montabaur, Germany

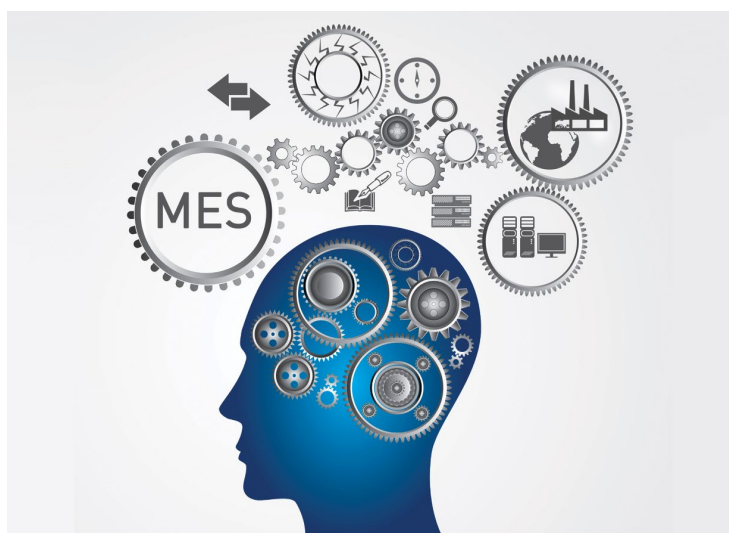
Tel.: +49 2602-10 65-0  
Fax: +49 2602-10 65-30  
[kontakt@itacsoftware.com](mailto:kontakt@itacsoftware.com)  
[www.itacsoftware.com](http://www.itacsoftware.com)

The participants will train, for example, how to autonomously map the production processes of an everyday product in the iTAC.MES.Suite. In an introduction given by the instructor, the available tools and practical tasks are presented and explained. During the training, the participants can ask questions to solve the tasks or benefit by the questions of other participants.

"In our design training, the user is given complex tasks that he or she must solve independently. Among other things, the production of a cabinet is simulated, and the production orders created for this purpose must be mapped in our MES. This practical experience results in a great benefit for the later application", explains Peter Bollinger.

The Design Training can be booked as an individual training with different focal points at:

<https://www.itacsoftware.com/en/service/educational-services/>



***Autonomously map production processes of an MES with new Design Training courses from iTAC***

iTAC Software AG  
Aubachstr. 24  
56410 Montabaur, Germany

Tel.: +49 2602-10 65-0  
Fax: +49 2602-10 65-30  
kontakt@itacsoftware.com  
www.itacsoftware.com

### **About iTAC**

iTAC Software AG, a stand-alone company of mechanical and plant engineering group Dürr, offers Internet-enabled information and communication technologies for the manufacturing industry. Founded in 1998, the company is now a leading MES manufacturer. The iTAC.MES.Suite is a manufacturing execution system used worldwide by companies in various sectors, including the automotive, electronics/EMS, telecommunications, medical technology, metals and energy industries. Further systems and solutions for implementing IIoT and Industry 4.0 requirements complete the portfolio. iTAC Software AG is headquartered in Montabaur, Germany with offices in the USA, China and Japan, and has a worldwide partner network for sales and service. iTAC's philosophy is to connect people, data and systems.

The Dürr Group is one of the world's leading mechanical and plant engineering companies with outstanding expertise in the fields of automation and digitalisation/Industry 4.0. Dürr products, systems and services facilitate highly efficient manufacturing processes in various industries. Dürr supplies many industries, including the automotive, mechanical engineering, chemical, pharmaceutical and wood processing sectors. The company has 92 locations in 32 countries and 16,500 employees worldwide.

**iTAC Software AG**  
Aubachstr. 24  
56410 Montabaur, Germany

Tel.: +49 2602-10 65-0  
Fax: +49 2602-10 65-30  
[kontakt@itacsoftware.com](mailto:kontakt@itacsoftware.com)  
[www.itacsoftware.com](http://www.itacsoftware.com)

## **Contact**

iTAC Software AG

Michael Fischer

Product Marketing

Tel.: +49 2602 1065 217

Fax: +49 2602 1065 30

Email: [michael.fischer@itacsoftware.com](mailto:michael.fischer@itacsoftware.com)

[www.itacsoftware.com](http://www.itacsoftware.com)

PR agency:

punctum pr-agentur GmbH

Ms Ulrike Peter

Managing Director

Tel.: +49 211 971 7977 0

Email: [pr@punctum-pr.de](mailto:pr@punctum-pr.de)

[www.punctum-pr.de](http://www.punctum-pr.de)

**iTAC Software AG**  
Aubachstr. 24  
56410 Montabaur, Germany

Tel.: +49 2602-10 65-0  
Fax: +49 2602-10 65-30  
[kontakt@itacsoftware.com](mailto:kontakt@itacsoftware.com)  
[www.itacsoftware.com](http://www.itacsoftware.com)